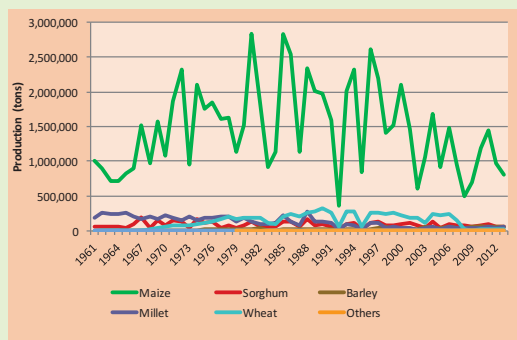


ZIMBABWE



Maize Variety Options for Africa

Maize is the most important crop for Zimbabwe. Maize production in this country experiences the most frequent and severe fluctuations in southern Africa. Area, yield and production declined by 1.5%, 1.8%, and 3.3%, respectively, each year between 2000 and 2013. Between 2000 and 2011 Zimbabwe imported 354,000 tons of maize, worth US\$ 128 million annually. Frequent drought is the main cause of yield loss in this country.



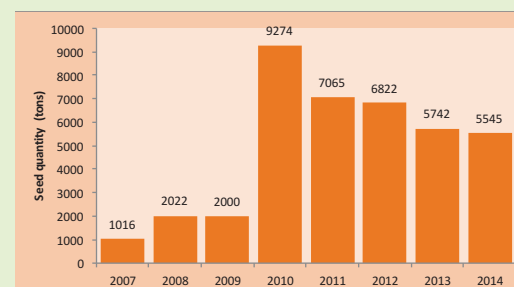
DTMA, in partnership with the national research system and private as well as public seed companies, has released drought tolerant maize varieties suited to various agro-ecologies.

Drought tolerant maize varieties released under DTMA

Variety name	Release year	Hybrid/OPV	Maturity range	Color	Owner	Suitable agro-ecologies	Yield (tons/ha)
PAN53	2007	Hybrid	Intermediate	White	Pannar	Wet & dry mid-altitude	4.0-6.0
SC641	2008	Hybrid	Intermediate/late	White	Seedco	Wet & dry mid-altitude	4.0-6.0
ZAP51	2008	Hybrid	Intermediate	White	Agriseeds	Wet & dry mid-altitude	4.0-6.0
ZAP61	2008	Hybrid	Intermediate	White	Agriseeds	Wet & dry mid-altitude	4.0-6.0
ZM309	2009	OPV	Extra-early	White	MOA	transition & Drier mid-altitudes	2.0-3.0
ZM401	2009	OPV	Early	White	MOA	transition & Drier mid-altitudes	2.0-3.0
AG541	2010	Hybrid	Early	White	Agriseeds	transition & Drier mid-altitudes	4.0-6.0
Pris 601	2010	Hybrid	Intermediate	White	Klein Karoo	transition & Drier mid-altitudes	4.0-6.0
SC727	2010	Hybrid	Late	White	Seedco	Wet & dry mid-altitude	4.0-6.0
ZM527	2010	OPV	Early	White	MOA	Wet & dry mid-altitude	4.0-6.0
ZS263	2010	Hybrid	Intermediate	White	Zamseed	Wet & dry mid-altitude	4.0-6.0
ZS265	2010	Hybrid	Intermediate	White	Zamseed	Wet & dry mid-altitude	4.0-6.0
PAN3M-01	2013	Hybrid	Extra-early	White	Pannar	Wet & dry mid-altitude	4.0-6.0
PG563	2013	Hybrid	Intermediate/late	White	Progene	Wet & dry mid-altitude	4.0-6.0
SC301	2013	Hybrid	Extra-early	White	Seedco	Wet & dry mid-altitude	3.0-4.0
Mutsa MN521	2014	Hybrid	Early	White	Mkushi	Wet & dry mid-altitude	3.0-4.0
Mama MQ623	2014	Hybrid	Intermediate	White	Mkushi	Wet & dry mid-altitude	4.0-5.0
NT551	2014	Hybrid	Intermediate	White	National Tested Seeds	Wet & dry mid-altitude	4.0-6.0
NT541	2014	Hybrid	Early	White	National Tested Seeds	Transition & Drier mid-altitudes	4.0-6.0



Zimbabwe is the one country where large amounts of drought tolerant maize seed have been produced. Declines after the 2010 peak are primarily because of frequent droughts and the resulting decline for seed demand.



Priorities:

- Increasing investment
- Building research capacity
- Expanding adoption of new varieties