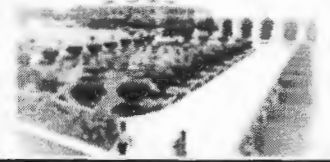




WRC

Wheat Research Center



About WRC	Staff	Annual Report	Publications	Research	Modern Wheat Varieties	Contact
---------------------------	-----------------------	-------------------------------	------------------------------	--------------------------	--	-------------------------



Wheat Research Center (WRC) of Bangladesh Agricultural Research Institute (BARI) works on the improvement and development of wheat crops and wheat based cropping system



W H E A T R E S E A R C H C E N T E R

INTRODUCTION

Wheat has established itself as a second most important cereal crop in Bangladesh. The consumption rate of wheat has also been increasing day by day. As a result wheat area and production was increasing and reached 1.9 m ton in 1999-2000, but in the past three years, the area and production is continuously decreasing due to unfavorable climatic conditions, specially rains at the maturity and harvesting stage and switched over some area to boro, potato and maize. Farmers are facing problems in harvesting, threshing and drying due to inadequate machinery facilities. The current wheat season was initially favorable due to cooler winter, but at the later stage of the crop severe *Helminthosporium* attack on leaves of Kanchan due to warm and humid weather reduced the kernel weight. Spike infection was also found in the south and southwestern part of the country. During 2002-03, an area of 0.665 million hectares was cultivated under wheat and the production was about 1.5 million tons. This production was about 6.85% lower than that of 2001-2002. The area reduction in the current year from the last year was 10.41 %. The national average wheat yield in 2002-2003 was 2.25 t/ha, which was 4.16% higher than last years average.

The research programs were undertaken to develop suitable technologies focusing the major problem areas throughout the country emphasizing the issues associated with rice-wheat system. Brief accomplishments of wheat research activities during 2002-2003 have been described in this report.

[Home](#)