

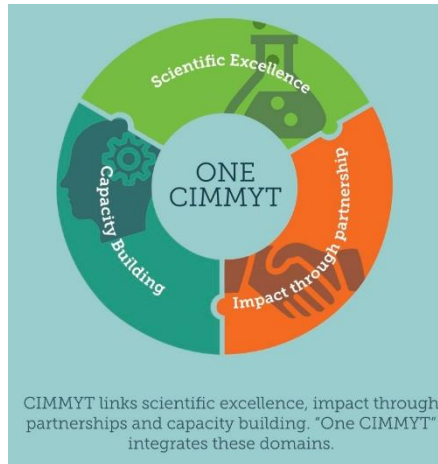
Gender and Social Inclusion Research Unit

Unit overview

Hom Gartaula
CIMMYT – South Asia

2019

Research theme: Gender & Social Inclusion



Mission

Maize and wheat science for improved livelihoods

Vision

CIMMYT contributes to the development of a world with less poverty, healthier and more prosperous people, more resilient farming systems and fewer global crises.

- Reducing poverty and hunger by sustainably increasing the productivity of maize- and wheat-based farming systems
- A careful integration of a gender perspective in the research process is a means to ensure that maize- and wheat- R4D leads to sustainable intensification of maize- and wheat-based agri-food systems and socially equitable advances in human wellbeing

- CIMMYT Tool for integration of gender in proposal development, 2013



Underlying Principles

- Agriculture takes place within a social system, and GSI issues are integral part of the system
- Gender is more than a proxy for women or a binary division between biological men and women
- It is rather a relational concept, more nuanced perspective through socially constructed relationships



Underlying Principles

- Gender is more than collecting sex-disaggregated data to fulfill donor mandates
- It is also about ensuring equitable and transformative impacts of innovations to the people differed by different social identities
- Gender is shaped by the intersecting ties of age, class, caste, ethnicity, marital status, religion, and other forms of social differences
– makes social inclusion issues more prominent



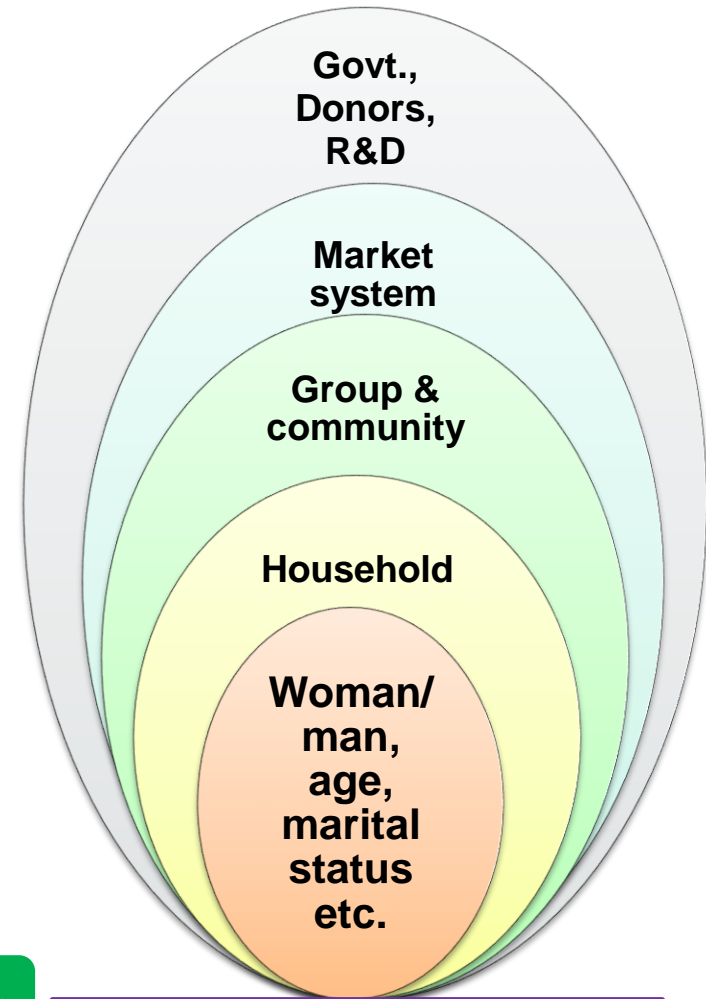
Intersectionality: Gender +

- Gender x marital status
- Gender x lifecycle (age)
- Gender x ethnicity
- Gender x caste
- Gender x culture
- Gender x socioeconomic status (land, income, education)



Contextualising GSI

- Understanding *who* can engage with, access and benefit from maize and wheat R4D
 - ✓ Gender norms and agricultural innovation
 - ✓ Maize-legume value chains
 - ✓ Maize seed sector development
 - ✓ Social inclusion action research
 - ✓ Methodological innovation – towards transformative approaches for inclusive AR4D
 - ✓ Gender & social inclusion mainstreaming
- Cross-cutting issue
 - ✓ CIMMYT R4D promotes equality of opportunity and outcomes



Maize & Wheat R4D
X
Gender and Social
Inclusion



CIMMYT able to contribute
to equality of opportunities
and outcomes

Social context: enables and constrains opportunities and outcomes differently, for different social groups

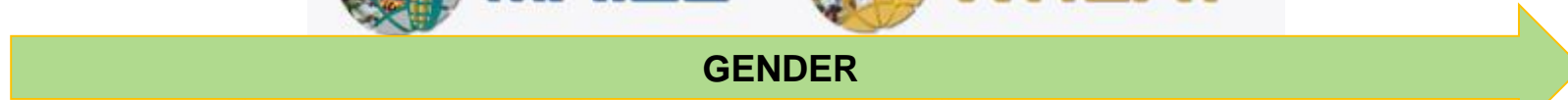
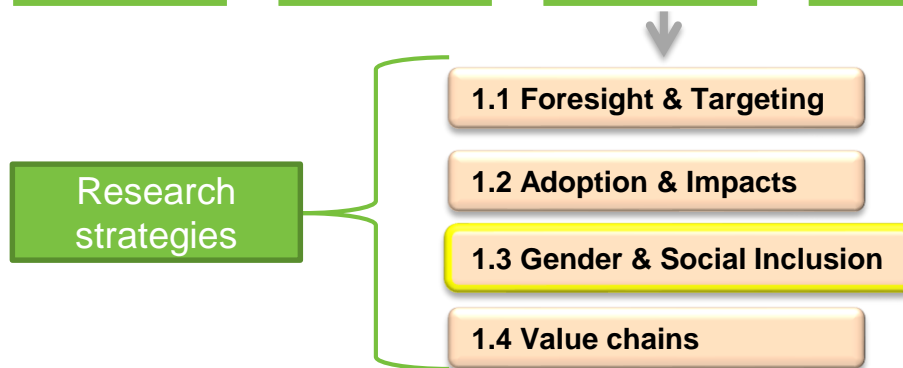
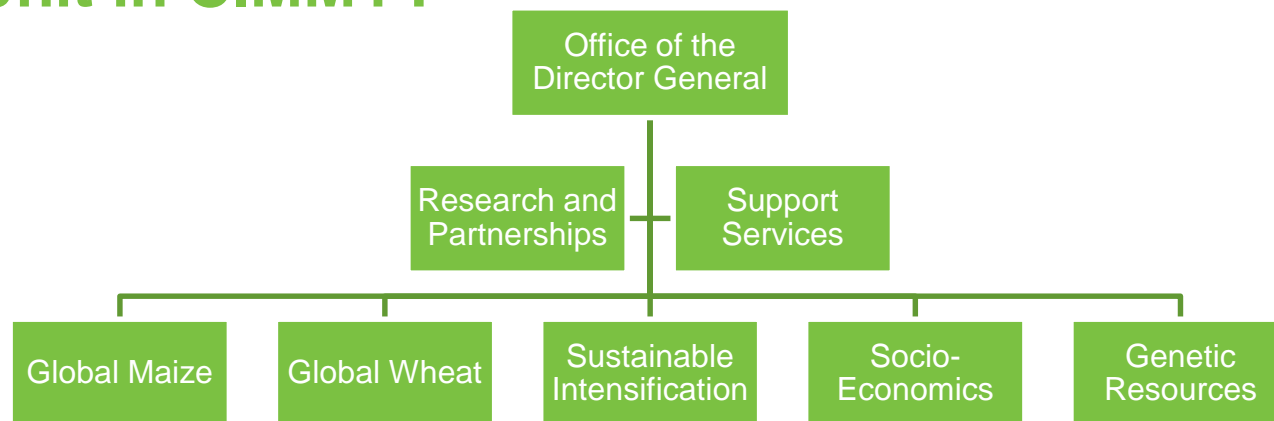


Objectives

- The Gender & Social Inclusion theme aims to:
 - i. generate scientific knowledge on gender & social inclusion in agriculture, specifically focusing on maize-and wheat-based farming systems (**strategic gender research**); and
 - ii. provide CIMMYT researchers worldwide with relevant information needed for integrating gender & social inclusion into project development, implementation and ME&L (**integrative gender research**)

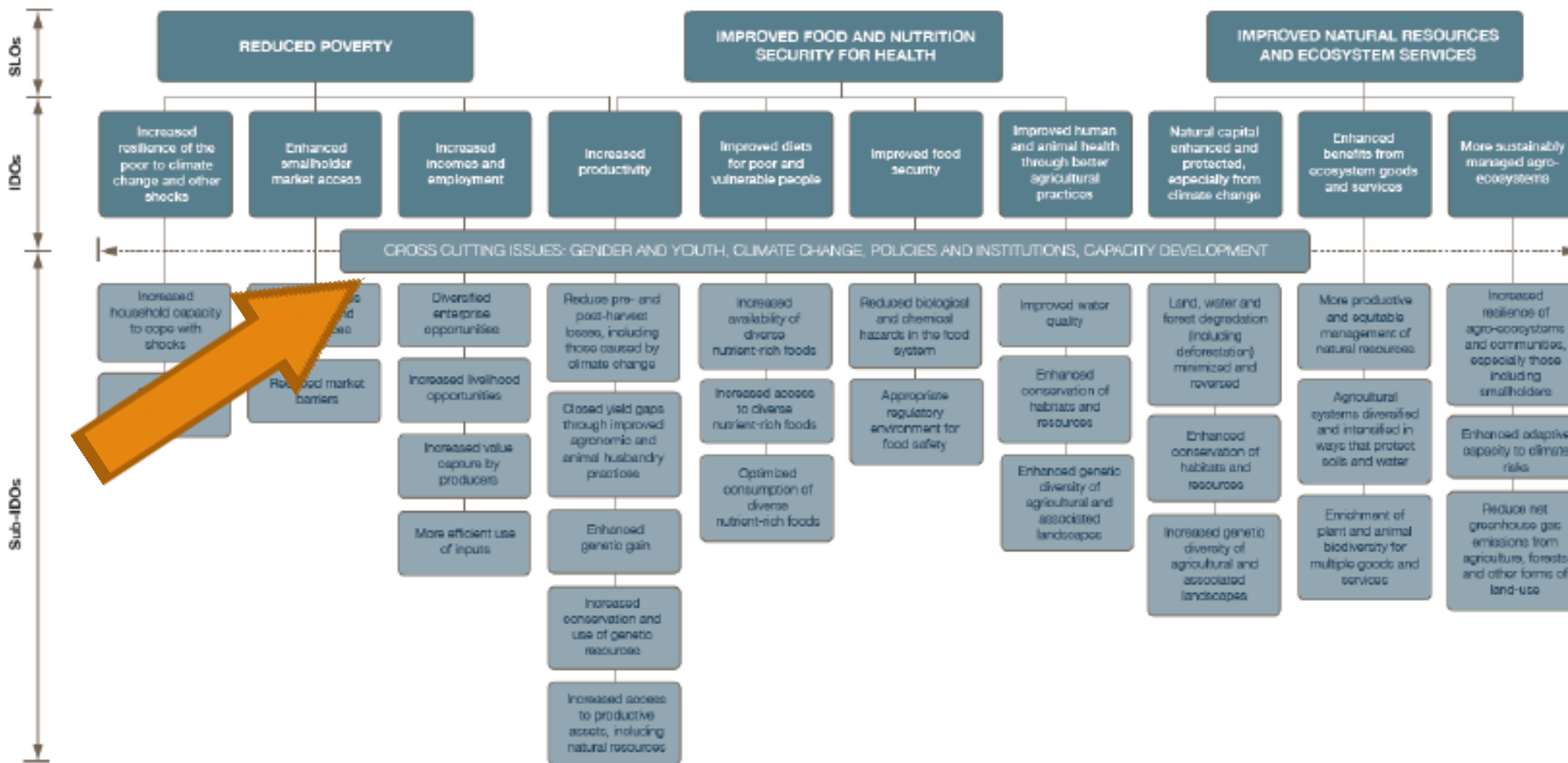


GSI Unit in CIMMYT

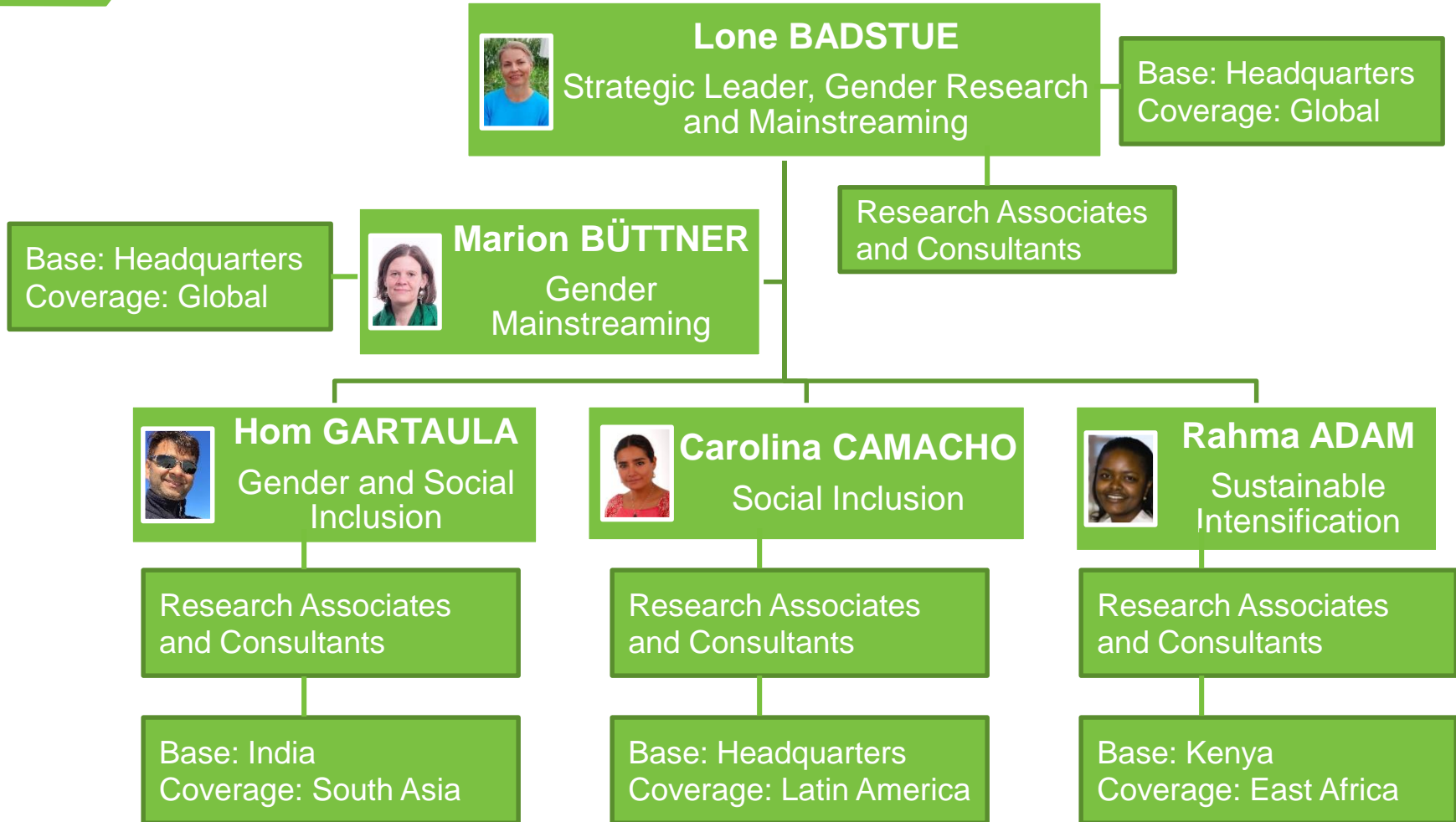


CGIAR Results Framework

Centers and donors have a collective responsibility for the performance and results of the system



GSI Team



CIMMYT Gender & Social Inclusion activities

Research

All activities associated with research:

- CN & Proposal write up
- Completion of research project outputs and outcomes
- Development, guidance, FU and approval of research partners' outputs
- Development of methodologies and conceptual frameworks
- Data collection, data management, clean-up, coding
- Data analysis & write up
- Research collaboration and capacity building
- Generation of scientific knowledge through research products, e.g. publications...

Mainstreaming

All activities associated with integrating gender aspects into research projects:

- Integration of gender into frameworks and procedures for CIMMYT research
 - Integration of gender into CIMMYT Project Cycle and project portfolio
 - Development and implementation of framework for monitoring progress on gender (and youth)
- Development of gender tools, guidelines, policy, and other resources for gender integration in maize & wheat research for development
- Capacity building on gender in ag
- Effective integration of gender and youth in CRPs as per CGIAR SRF

Institutional

All activities associated with institutional gender aspects:

- Institutional information material, incl. brownbags
- Internal and external audits
- DG, Consortium, CRP and SEP reports, strategies, proposals, meetings, workshops, etc.
- DG speech write-up
- Participation in institutional events (e.g. Admin, Science weeks)
- Support to other areas, e.g. HR (gender in the workplace)
- Enhance internal (CIMMYT) and external (CGIAR, NAREs, IARs, donors, Universities, NGOs, etc.) collaboration
- Other (e.g. communication, recruitment, donor relations)

Management and administrative tasks

GSI in South Asia

Coverage

- Bangladesh, India, Nepal, Pakistan, +

Research

- Strengthen evidence base on gender and social inclusion issues in maize- and wheat-based agri-food system in South Asia

Mainstream

- Integration of gender and youth inclusion issues into frameworks and procedures for research
- Capacity building on GSI in agriculture

Institutional

- Meetings, workshops, presentations, etc.
- Facilitate internal as well as external collaboration



Priority areas

- GSI in sustainable intensification of M&W agri-food system
- Gender responsive and inclusive outcomes of M&W breeding
- Engaging youth and modernizing agriculture, male out-migration
- Cross-fertilizing social and biophysical sciences in agriculture
- Improving status of agriculture (as an occupation)
- Gender: Advocacy vs. Science



Current projects

- Gender implications around weed management under conservation agriculture for sustainable intensification in the eastern IGP
- Sustainable and Resilient Farming System Intensification in the Eastern Gangatic Plains
- Documenting state of the art knowledge on gender and social inclusion in maize- and wheat-based agri-food systems in South Asia
- Gender implications of climate smart agriculture for equitable and sustainable mitigation strategies in India





**Thank you
for your
interest!**