

Disease Symptoms of Maize Lethal Necrosis (MLN)

Maize Lethal Necrosis (MLN)
 Causal viruses: Maize chlorotic mottle virus (MCMV) and Sugarcane mosaic virus (SCMV)



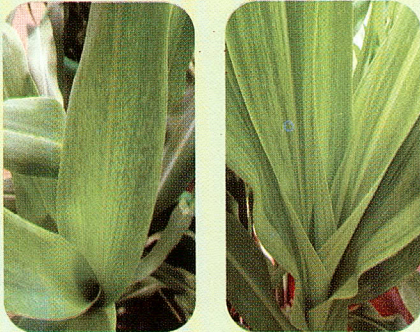
Sugarcane Mosaic Virus (SCMV) symptoms



Maize Chlorotic Mottle Virus (MCMV) symptoms



Early MLN Symptoms



Mosaic and mottling

Mild mosaic and mottling

Shortened internodes ; Severe chlorotic mottle



Severe chlorosis and leaf necrosis



'Dead Heart' symptoms



Necrosis starting from the leaf margin, coupled with mottling



Premature drying of the husks



Poor or no grain filling

